

Do not scale from drawings unless by agreement with HTA. Use figured dimensions only. Check all dimensions on site prior to commencing the works. Drawing to be read in conjunction with other relevant consultant information.

This drawing is the copyright of HTA Design LLP and must not be copied or reproduced in part or in whole, without the express permission of HTA Design LLP. Drawing to be read in conjunction with specification.

LEGEND

- Plot parameter boundary
- Application boundary
- SIW boundary
- Adjoining works delivered as part of SIW

Code Specification

- Paving Specification**
- P1 Permeable concrete paving. Colour Anthracite grey 50%/Mid grey 50%; 200 x 100 x 80mm; textured finish laid stretcher bond.
 - P2 Permeable concrete paving. Colour Anthracite grey 20%/Mid grey 50%/Light grey 30%; 200 x 300/200/100 x 80mm; textured finish laid stretcher bond.
 - P3 Permeable concrete paving. Colour Mid grey 60%/Light grey 40%; 200 x 300/200/100 x 80mm; textured finish laid stretcher bond.
 - P4 Permeable flag paving. 400 x 400 x 63 mm. Colour: Natural. Stretcher bond. Laid perpendicular to building line.
 - P5 Piora block paver or similar. Colour Charcoal 200 x 100x 60 mm Laid herringbone
 - P6 Piora block paver or similar. Colour Natural 200 x 100x 60 mm Laid herringbone
 - P7 Tactile blister paving. Colour Charcoal (dark grey); 400 x 400 x 50mm smooth finish.
 - P8 Self compacted gravel. Colour: Buff.
 - P9 Tiger mulch play surface. Colour Autumn . Resin bound. Build up varies on CFH
 - P10 Resin bound aggregate surface. Colour : Golden pearl
 - P11 Exposed aggregate concrete to match Brook Park specification
 - P12 Precast concrete step units. Colour silver grey with dark grey safety strip inlaid. Acid etched and waterproof.
 - P13 Stepping Stone pavers - Reclaimed concrete aggregate pavers. Colour silver grey. Textured finish. Cut to 900 x 300 x 50 mm
 - P14 Swale shingle and glacial boulders. Boulders 300-600mm ht. max length 900 mm.

- Edging Specification**
- K1 Raised kerb; 150 x 255 x 1000 mm. Flamed granite or textured concrete finish. Colour: Silver Grey. Upstand height varies: 50 / 125 mm
 - K2 Flush kerb; 150 x 255 x 1000 mm. Flamed granite or textured concrete finish. Colour: Silver Grey
 - K3 Concrete pin kerb 63 x 150 x 1000 mm. Silver grey textured finish.
 - K4 AluExcel 150mm x 75 mm edging or similar; Rolled finish.
 - K5 Planter wall. brick to match architectural detail. height varies. maximum 600mm from paving level. Brick edge coping.

- Boundaries & Gates**
- B1 Brick wall to 300mm height with 800 mm vertical bar railing. Powder coated steel RAL tbc. Brick to match architectural detail. Gate to match where required.
 - B2 Brick wall. Double brick 1100mm height. Brick coping top. Brick to match architectural detail
 - B3 Vertical bar railing fence. 2.4m height. Powder coated steel RAL tbc
 - B4 Vertical bar self closing fob access double gate. Powder coated steel RAL tbc. Bespoke element. Post fixing to manufacturers recommendations
 - B5 Vertical bar railing. min 1100 mm height. Powder coated steel RAL tbc. Fixed to concrete footing. Precast capping stone to top finish existing capping beam subject to EA approval.
 - B6 Low brick wall and railing. 300 mm brick to match architectural with Vertical bar railing fence. 1550 mm X 2.4 m height panels. Powder coated steel RAL tbc

- Street Furniture**
- F1 Solid beam bench - Drifter bench or similar; Length: 2000 - 3000 mm; FSC Hardwood bench with galvanised steel base
 - F2 Solid beam bench - Drifter bench or similar; Length: 1200 mm; FSC Hardwood bench with galvanised steel base
 - F3 Rough & Ready Cube seat or similar; FSC Hardwood bench with galvanised steel base
 - F4 Interpretation sign. To be developed as part of sidewalk wayfinding
 - F5 Obelisk / Totem. Bespoke structure from salvaged / reclaimed materials. Approx. dims: 8000 x 900 x 600 mm. Inclusion of lighting, intercom and power points depending on location and developed design.
 - F6 Handrail. Flat top 10 mm bar with vertical uprights. Powder coated steel RAL tbc
 - F7 Bb tap. 180 mm x 900mm ht. Locking. Powder coated steel box upstand. Plate mounted.
 - F8 Sheffield Cycle stand. Made from galvanised steel.
 - F9 Litter bin. Size: 260 x 985 x 775 mm. Powder coated Ral tbc
 - F10 Fingerpost wayfinding sign. To LBE sidewalk strategy detail
 - F11 Telescopic bollard. Automatic. 194 mm x 700mm ht. 1180 mm below ground unit. Stainless steel finish.
 - F12 Timber bollard - FSC certified timber hardwood bollard. Square form with recessed band and apex. 1250 ht x 145 x 145 mm. roof fixed
 - F13 Timber boardwalk. FSC hardwood timber sleepers with anti slip strips. Stainless steel fixings.
 - F14 Glacial boulders. Boulders 300-600mm ht. max length 900 mm. Swale shingle aggregate as accessory as required
 - F15 Bug hotel. Bespoke timber hardwood frame with reclaimed materials for invertebrate habitats. Roof fixed.
 - F16 Log pile- reclaimed logs. various lengths. Secured with wire to prevent movement.
 - F17 Timber sleeper planter wall. FSC certified green treated timber. 100 x 200 x 2400 mm. Cut to size and form.
 - F18 Totem wayfinding sign. To LBE sidewalk strategy detail

- Lighting**
- L1 Infrastructure street frontage column lighting.
 - L2 Column lighting with multiple luminaires. No. varies. Arne pole mounted. Luminaires - 310 mm dia. 3000K. Pole height: 4m Tbc RAL 7021M. Luminaire fixed to obelisk where appropriate
 - L3 Beam bollard or similar. 1000 mm ht. Stainless steel body. 3000k warm white LED IP65
 - L4 Down lit wall light or similar. Alloy body . Graphite colour. 3000k warm white LED IP65

7	16.09.22	SYA	Revised Issue for Planning
6	08.06.22	IH	Issued for Stage 3
5	23.05.22	IH	Revised ground floor
4	16.05.22	IH	Application boundary
3	02.05.22	SYA	Application boundary
2	08.03.22	IH	Issued for Planning
1	14.01.22	IH	Issued for Comment Stage 2

FOR INFORMATION

Client / project
Vistry Partnerships
Meridian 2

Drawing title
General Arrangement plan
Ground floor

Drawing number
MW2202-HTA-XX-ZZ-DR-L-90-9001

Scale @ A1
1:200

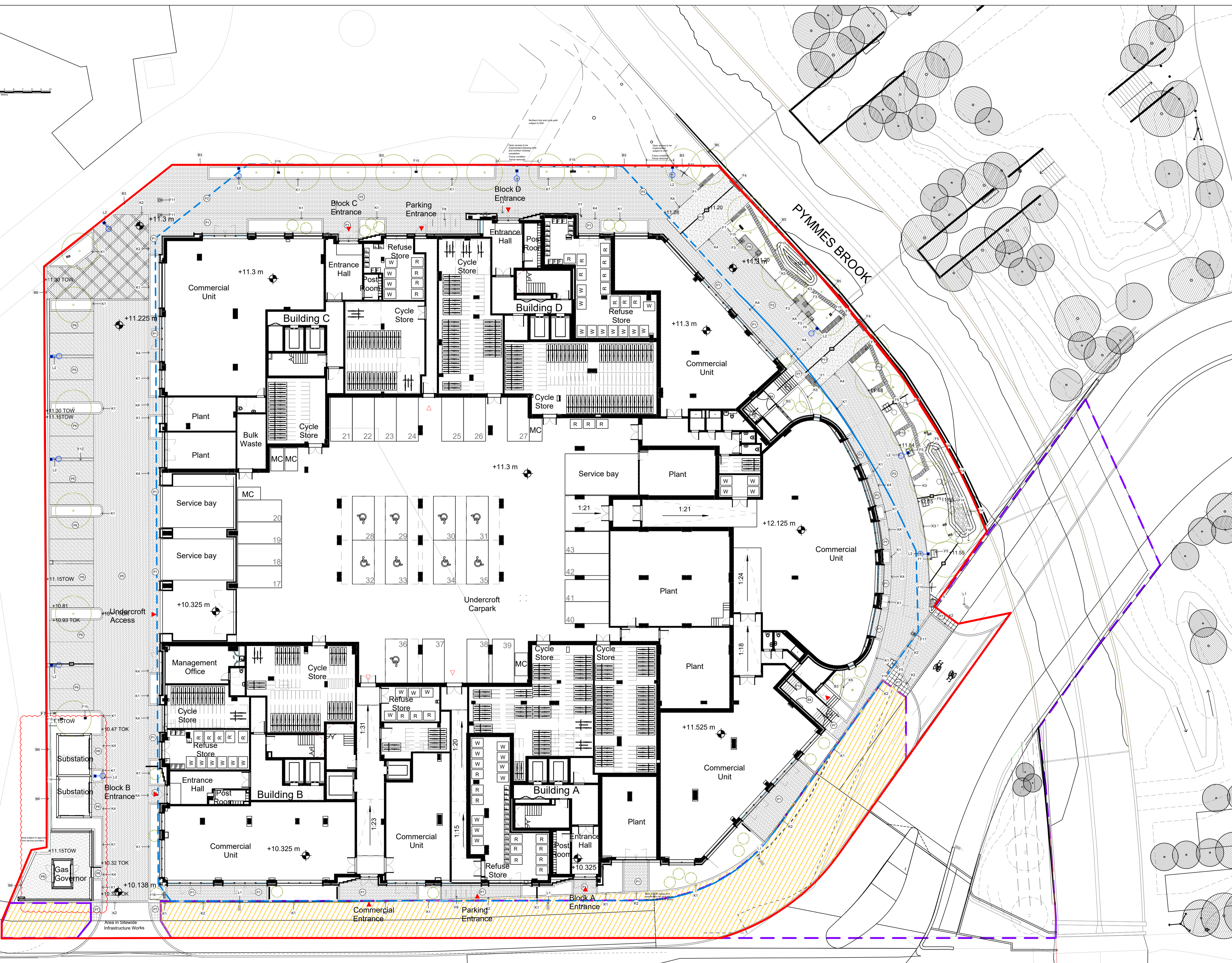
HTA Design LLP
 www.hta.co.uk

London | Edinburgh | Manchester | Bristol

Revision
7

Project code
VIS-MW2

HTA logo



LEESIDE ROAD

MW2202-HTA-XX-ZZ-DR-L-90-9003 Levels and falls
 MW2202-HTA-XX-ZZ-DR-L-90-2200-2207 Sections
 Planting plans
 MW2202-HTA-XX-ZZ-DR-L-90-9011
 MW2202-HTA-XX-ZZ-DR-L-90-9012

Note: Refer to SIW details and specification for all surfaces within SIW works